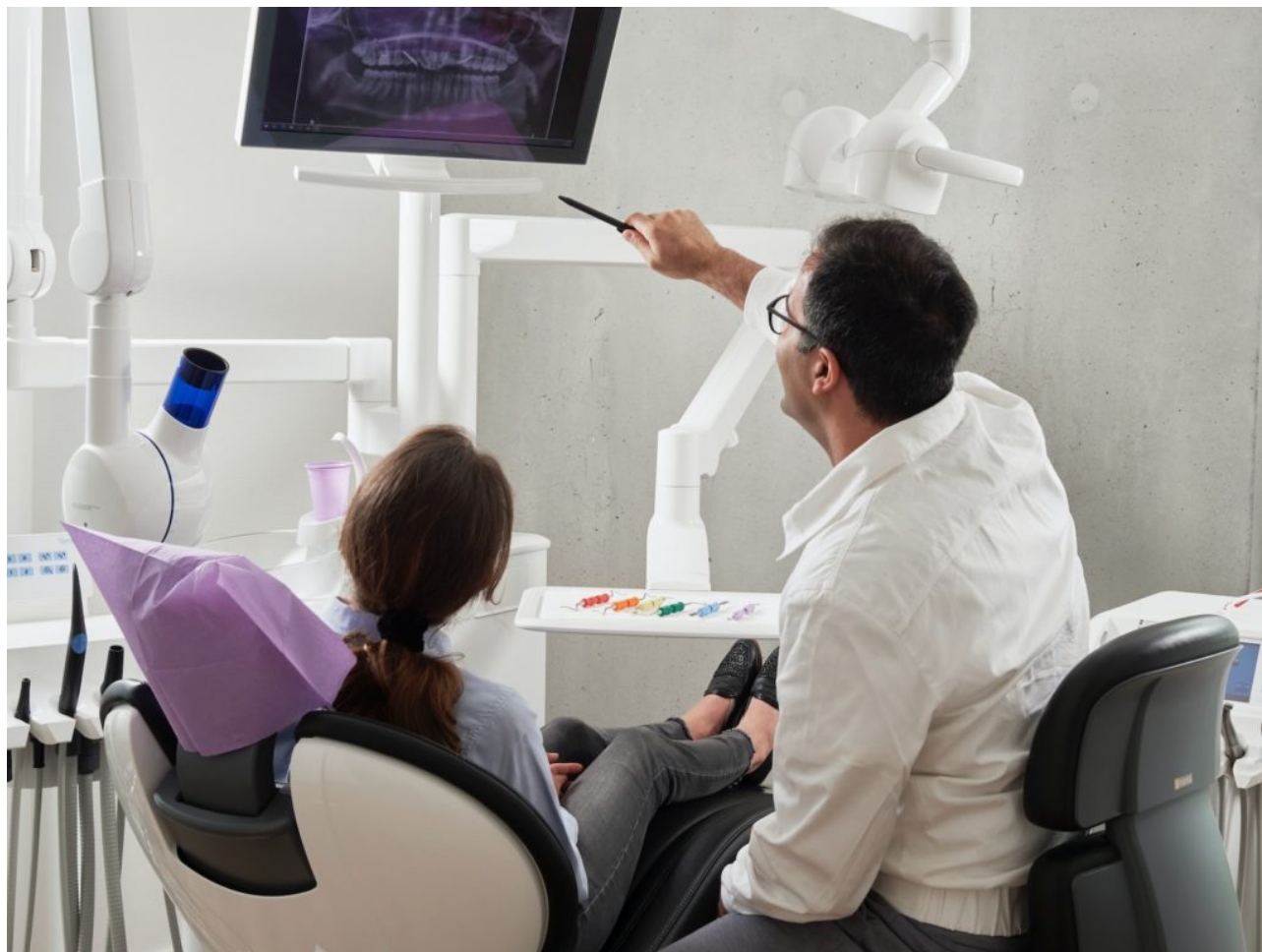


Dental Treatment Service Scheme (DTSS)



A prescribing facility for **dentists with GMS contract participating in the DTSS**, is limited to items listed in the '**Dental Prescribable Items**', available on the PCRS website. A special DTSS prescription form must be used for medical card holders and all patient details have to be accurately recorded on the DTSS prescription. Only patients over 16 years are eligible under this arrangement. A prescription levy applies to all medicines dispensed under DTSS.

During the COVID-19 pandemic paperwork must be submitted manually for Dental claims. Together with a DTSS prescription, we advise including the claim forms as support documentation to ensure prompt payments.